



NACHBUR

P E R F E K T I N P R Ä Z I S I O N

A warm welcome to Nachbur



Each piece is a work of art

General Informations

Foundation

1947

Legal Form

Incorporated company

Ownership

100 % family owned

Board of Management

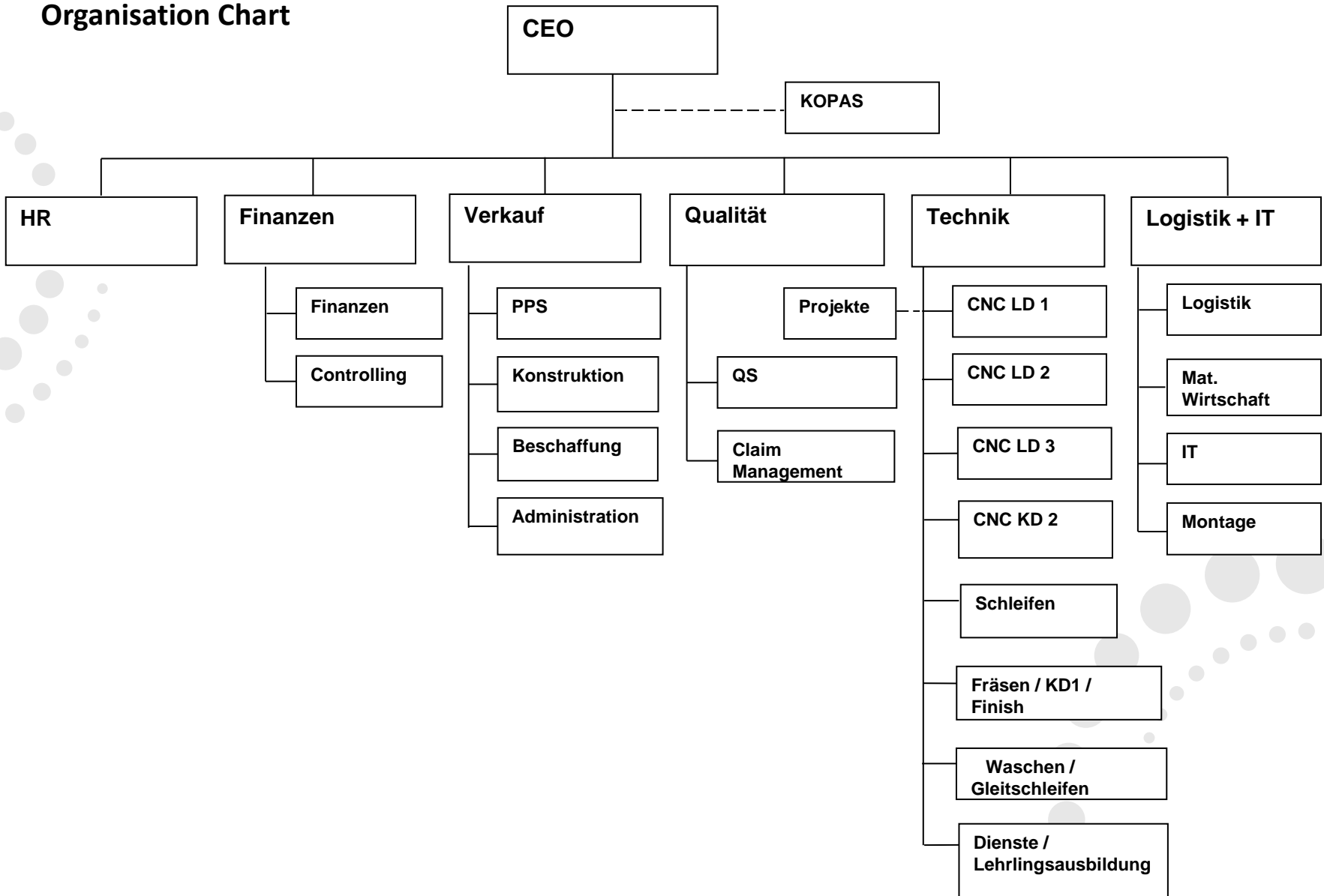
Gabriela Graf
Daniel Graf
Hans-Jürg Renk
Axel Förster

Auditor

Gfeller + Partner AG



Organisation Chart



Team

Employees	100	
Sales / Technology / Administration	14	14 %
Production	76	76 %
Quality	10	10 %
Trainees	6	6 %



History

The family-owned and operated business has been offering solid and solution-oriented cooperation since more than 75 years. We rely on a stable team of employees and suppliers. These relationships are the foundations that ensure our quality and drive our innovations.



History

2023 Commissioning of the 4th 3D measuring machine

2022 Own photovoltaic system with 305 kWp

2021 automation of grinding department with robot loading

2020 expansion of our milling shop

2019 investment in another measurement machine

2018 our investment in the first CNC milling machine

2017 investment in 4 new CNC lathes

2016 Investment in new CNC turning machines

2016 Extension of our logistics and assembly departments

2015 commissioned new water treatment plant

2015 investment in new CNC lathes

2014 commissioned new cleaning system

2013 investment in new CNC lathes and state-of-the-art measuring technology

2011 process monitoring with shaft measuring machine

2010 capacity expansion with a lot of CNC lathes

2007 process monitoring with 3-D measuring machine

2007 certification according to ISO 14001

2006 management of operations taken over by third generation of Nachbur family

2002 dedication of the expansion building

1992 ISO 9001 certification

1955 first apprenticeships offered

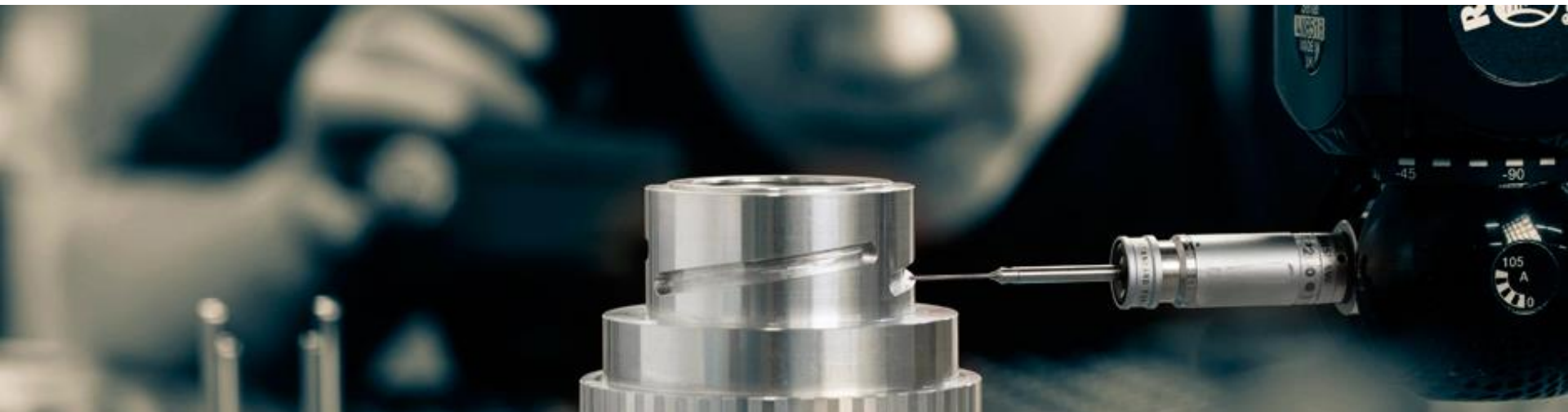
1947 Ernst Nachbur founded the company

Our aim: «Perfect in precision»

Each brand starts with a promise. And the promise leads to success if actions follow what's said and what's done provide a real benefit.

Nachbur's brand promise is "Perfect in precision". And our customers appreciate this promise of quality because it strengthens their own promise of quality. Strong customers are our mainstay and allow us to continue building on our brand promise.

«Perfect in precision» means continuous development and improvement to deliver real value reliably to our customers.



Nachbur quality pays for itself over the Swiss haul

We make this promise to all our partners and keep it. Having Nachbur components in their products helps our customers know they can always offer proof of high quality. And we keep on improving that quality each and every day.

Even as market demands are constantly changing, our commitment to quality remains the same: ensuring quality that is consonant with protecting our environmental and driving innovation that is committed to our Swiss and successful tradition. NACHBUR quality pays for itself over the Swiss haul.



Core competences

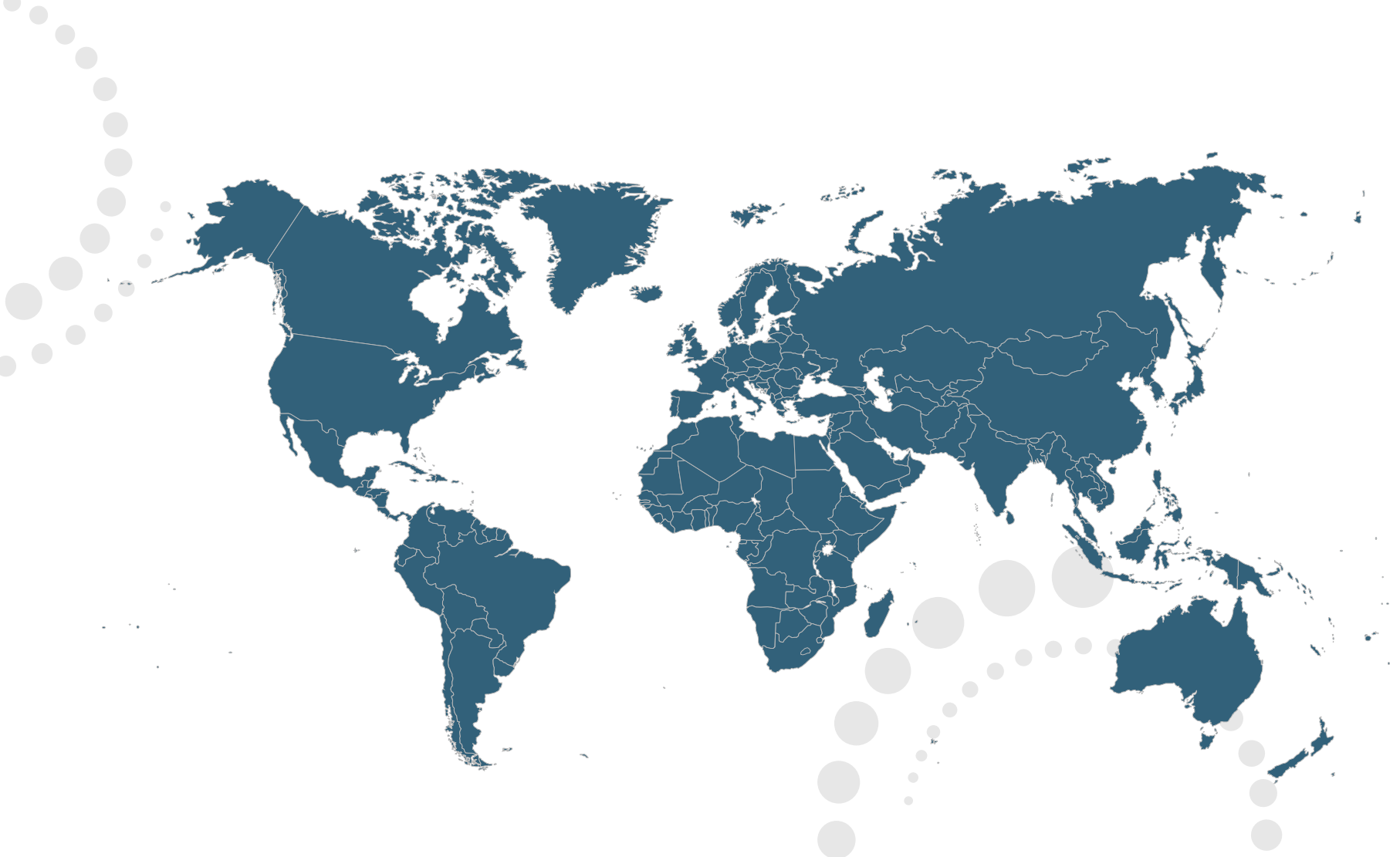
For over 75 years, we have focussed on the following core competencies:

- **Turned parts**
- **Milled parts**
- **Complete assemblies**



Markets

«Manufactured by Nachbur» products are used worldwide



Our customers

Wherever turned and milled parts or complete assemblies are needed, wherever precision and the highest quality are needed to ensure overall performance, Nachbur is your reliable partner.

Whether in medical products or general industry, optics, hydraulics, sensor technology, measurement and control technology, or electrical equipment, we encourage our customers to measure us against our promise: «Perfect in precision».



Our customers

- Medical industry
- Optics
- Measurement and control technology
- Hydraulics
- Electrical
- General industry



Medical industry



Optics



Measurement and control technology



Hydraulics



Electrical



Highend industry



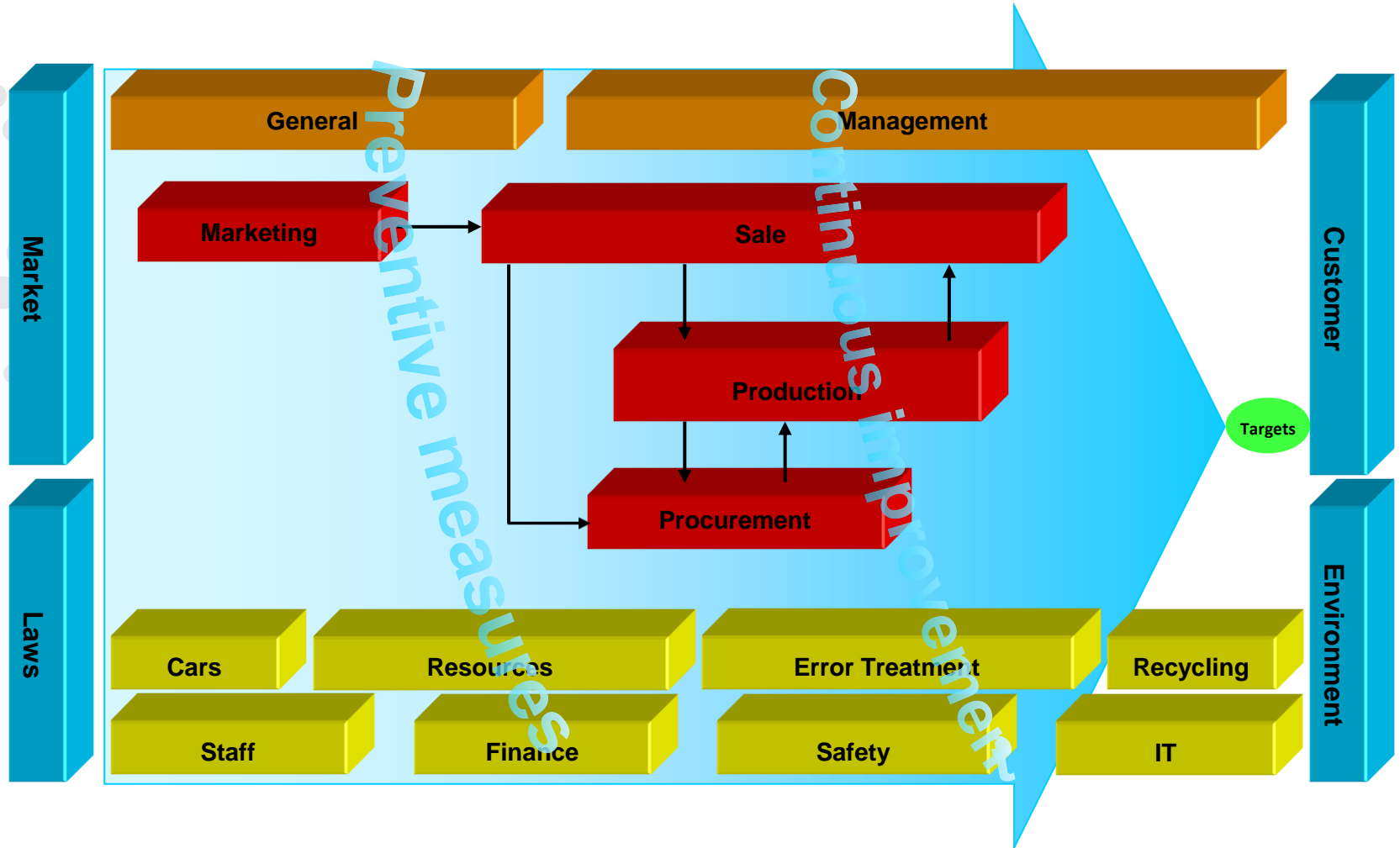
Milled parts



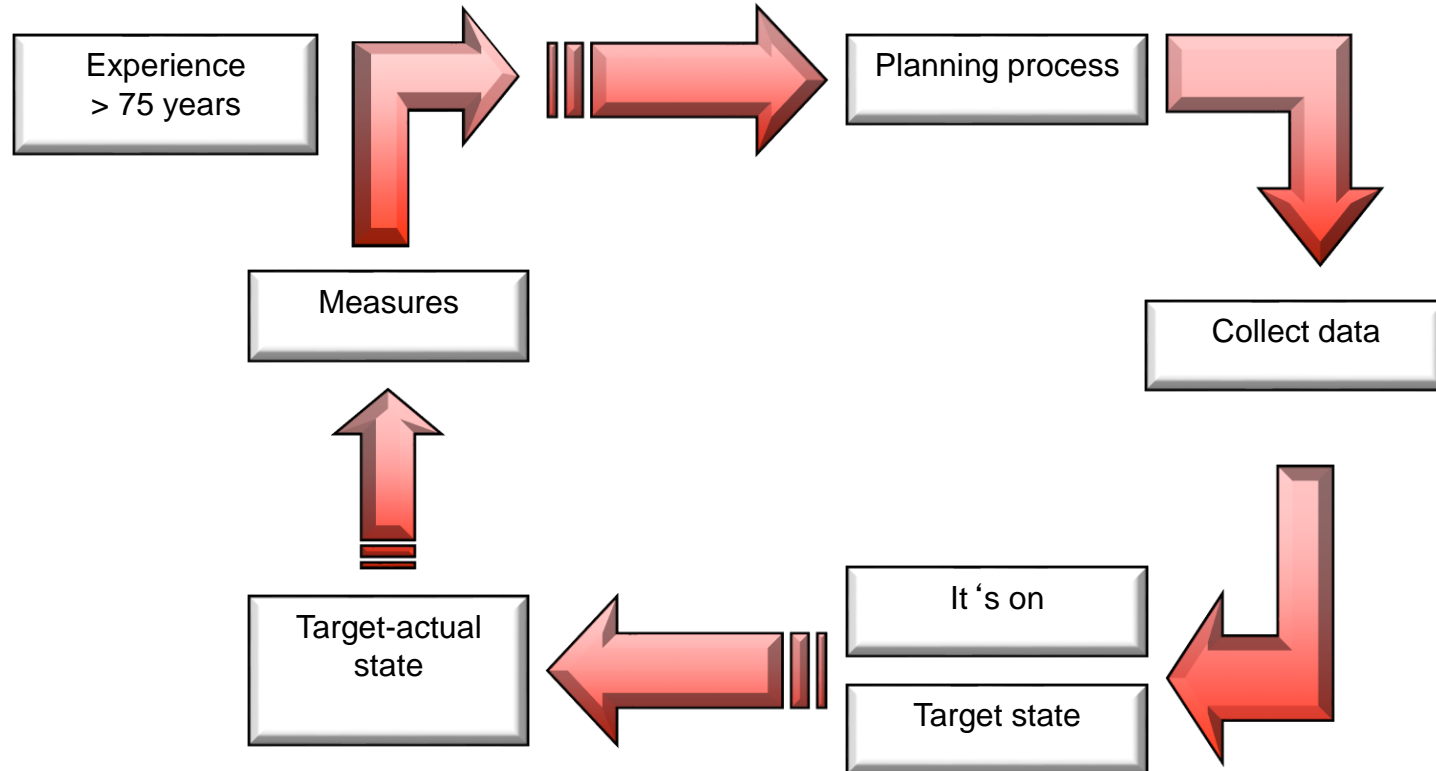
Complete assemblies



Process structure



Continuous improvement process



Product design

We are already making in the development phase our contribution to our customers competitive products.

Do you have a need for our engineering services?



Financial

To secure a long-term cooperation

- Figures
- Financial plan
- Investment plan
- Liquidity plan
- Swiss GAAP FER
- IKS



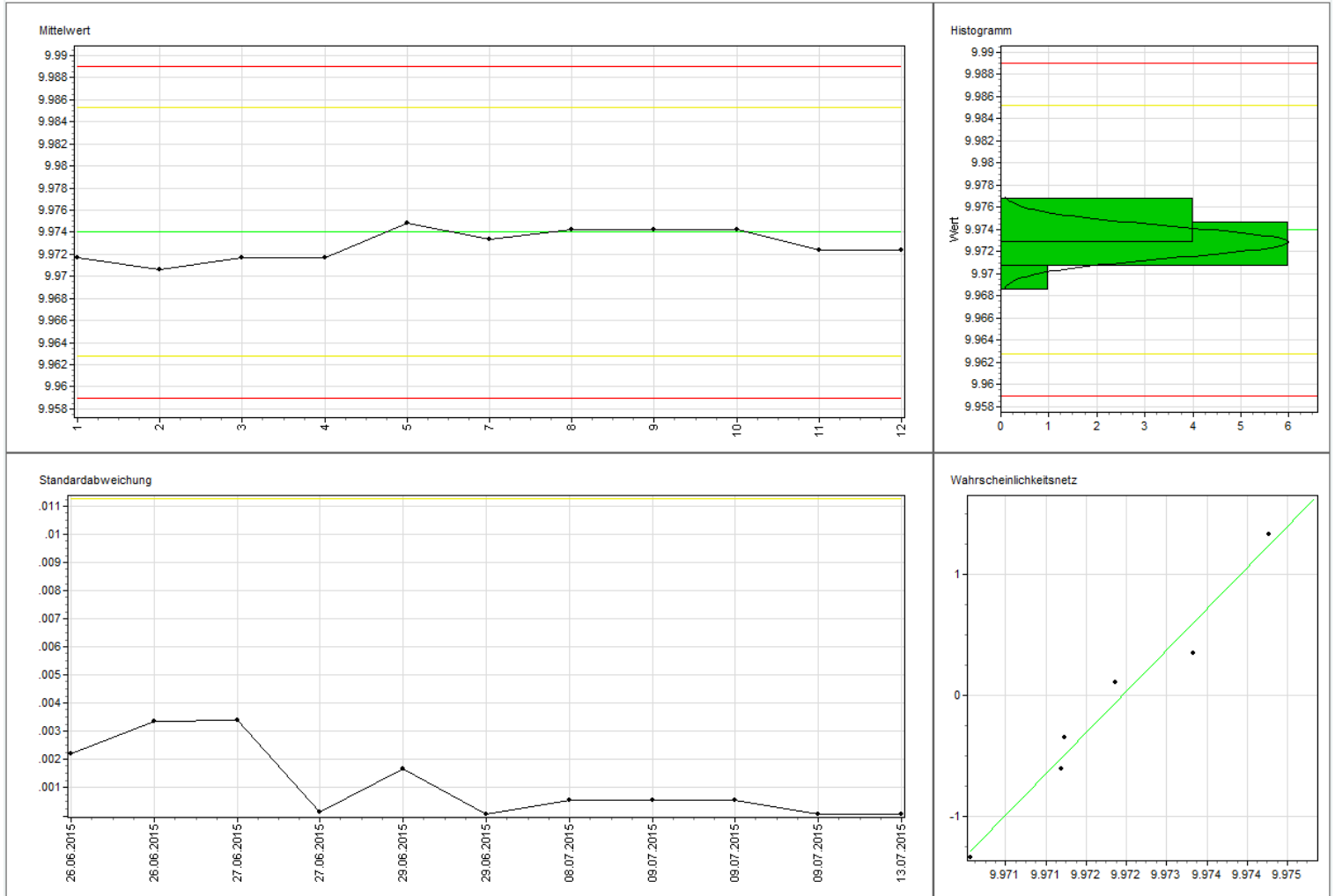
Quality planning

For each item a quality planning is performed

Stammdaten		AP		FMEA		KP		PP																					
Ag Nr	Ag Beschreibung	Pos-Nr	Merkmale Prozess	Produkt	Merkm- al Art	Prüfhinweis	Soll- wert	Einheit	Stellen- anzahl	Sym- Toleranz	UT	OT	UGW	OGW	UEG X	DEG X	UEG S	DEG S	MEG S	Formel für berechnende Merkmale	CPK Grenze	Vert.	Bezug Skalier.	Prüfart Offset	Beantst. in	Eintr. Ergeb. in	Verant. Verant.	Stichp. Stichp.	Ko
020 \ 020	Drehen	010	Allg. Ausführung		Attr.	Gratfrei																				P-Karte		3	
		020	Oberflächengüt.		Attr.	Ra1.6, Ra3.2, Ra 0.8 100% Prüfung auf Verfärbungen und Beschädigungen																				P-Karte		3	
		56	A-Gewinde M8x1-6g		Attr.																					P-Karte		3	
		56.1	Gewinde Aussendurchm		Var.		7.974				-0.18	0	7.794	7.974	7.8165	7.9515										SPC Toleranz		3	
		56.2	Gewinde Flankendurchm		Var.		7.35				-0.138	-0.026	7.212	7.324	7.226	7.31										SPC Toleranz		3	
		56.3	Gewinde Kerndurchmess		Var.		6.773				-0.177	-0.026	6.596	6.747	6.61487	6.72812										SPC Toleranz		3	
		22	A-ø		Var.	Cpk >1.33	8				-0.015	0	7.985	8	7.9865	7.9385										SPC Toleranz		3	
		55	A-ø		Var.	Cpk >1.33	6.4				-0.02	0	6.38	6.4	6.382	6.398										SPC Toleranz		3	
		42	A-ø		Var.	Cpk >1.33	8.2				-0.015	0	8.185	8.2	8.18687	8.19812										SPC Toleranz		3	
		3.1	A-ø		Var.		9.974				0.03	-0.015	0.015	9.959	9.989	9.96275	9.98525									SPC Toleranz		3	
		3.2	A-ø		Var.		9.974				0.03	-0.015	0.015	9.959	9.989	9.96275	9.98525									SPC Toleranz		3	
		64	I-ø		Var.	Cpk >1.33	1.636				0.02	-0.01	0.01	1.626	1.646	1.628	1.644									SPC Toleranz		3	
		68	Länge		Var.	Cpk >1.33	13.075				0.04	-0.02	0.02	13.055	13.095	13.059	13.091									SPC Toleranz		3	
		29	Länge		Var.	Cpk >1.33	55.9				0.02	-0.01	0.01	55.89	55.91	55.892	55.908									SPC Toleranz		3	
		28	Länge		Var.	Cpk >1.33	107				0.03	-0.015	0.015	106.985	107.015	106.985	107.015									SPC Toleranz		3	
		30	Planlauf		Var.	Cpk >1.33	0				0	0.02	0	0.02	0.0025	0.0175										SPC Toleranz		3	
		35	Koaxialität		Var.	ø3.15	0				0	0.05	0	0.05	0.00625	0.04375										SPC Toleranz		3	

Process monitoring

During the entire production process



Logistics

Worldwide shipping to custom or own packaging through various distribution partners

- Fulfilment of individual orders
- Fulfilment of blanket orders
- Just in time
- Kanban
- Consignment warehouse
- Open-end orders
- No-inspection-needed deliveries



Security

- Work- and health protection
- Fire protection
- Building protection
- Environmental protection
- IT – protection
- Financial and marketing customer protection



Environment

We care for our environment and deal sustainably with the raw materials, and we use and comply with the ISO 14001 standard



We wish you a pleasant journey

Your Nachbur Team

